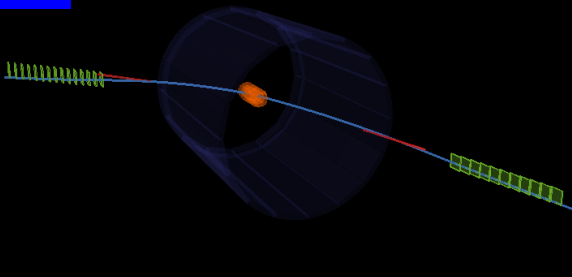




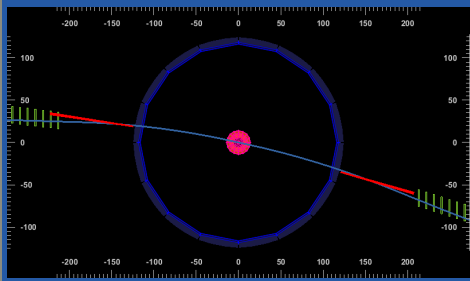
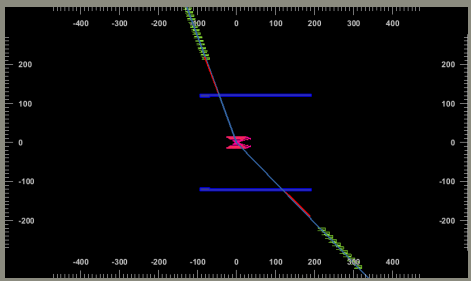
Belle II



Ereignis 1

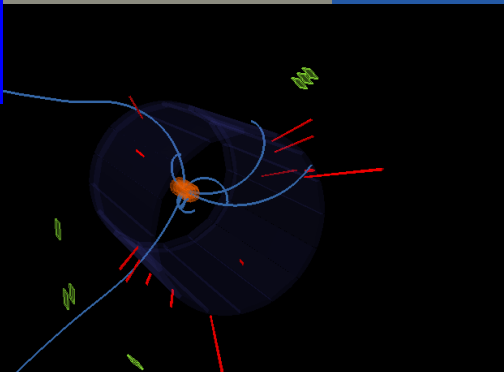
$$E = -0.0$$

$$\theta = 1.0$$





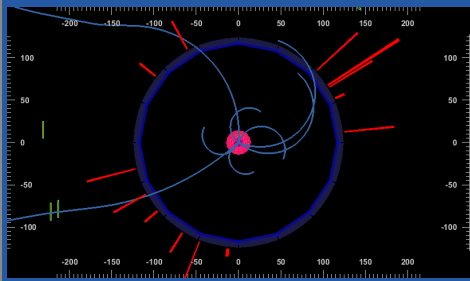
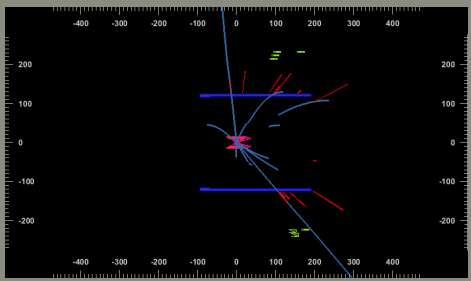
Belle II



Ereignis 2

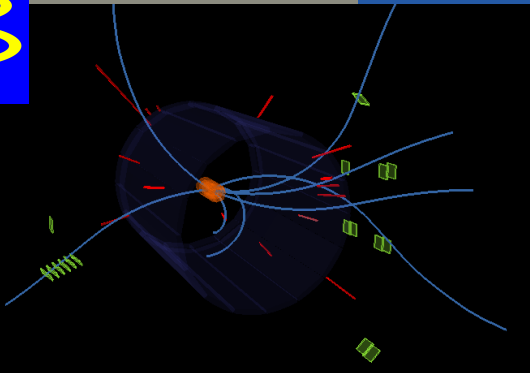
$$E = 31.1$$

$$\theta = 0.27$$





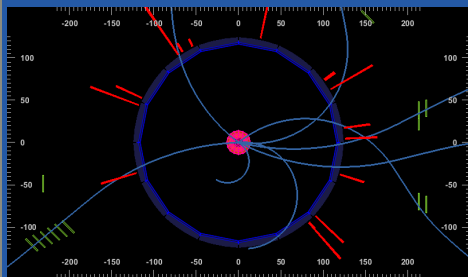
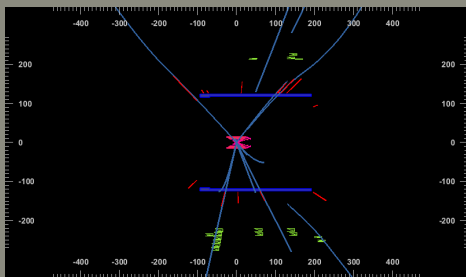
Belle II



Ereignis 3

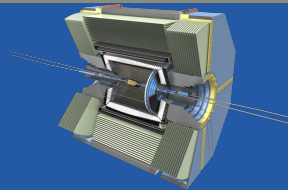
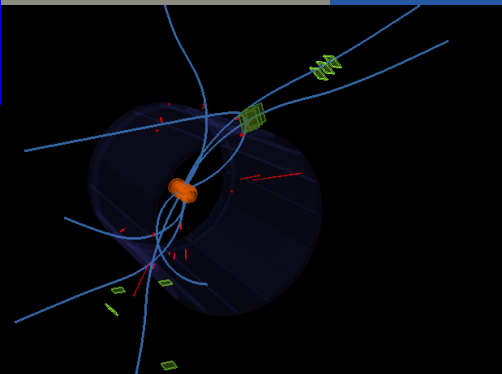
$$\cancel{E} = 3.0$$

$$\cancel{\nu} = 0.4$$





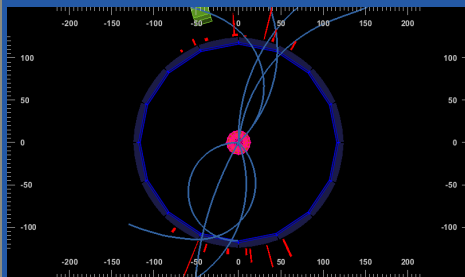
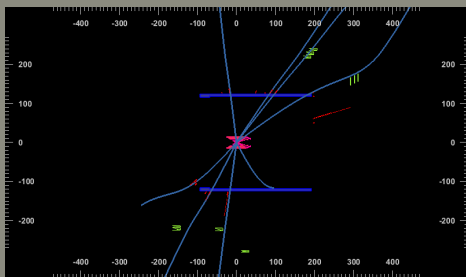
Belle II



Ereignis 4

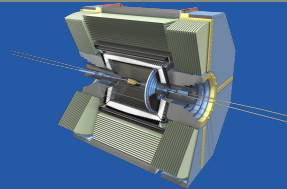
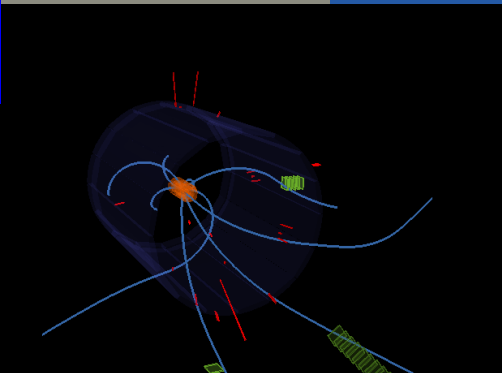
$$\cancel{E} = -6.6$$

$$\cancel{\vec{p}} = 0.43$$





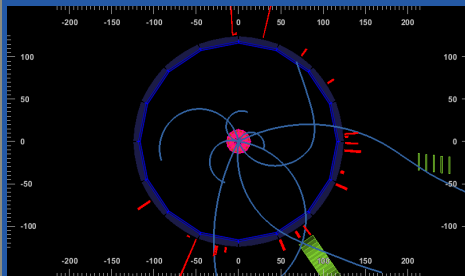
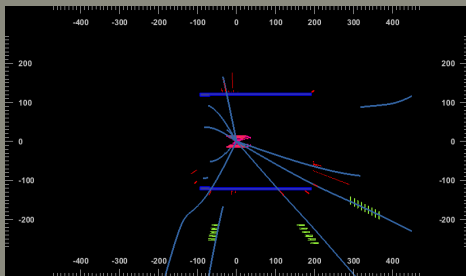
Belle II



Ereignis 5

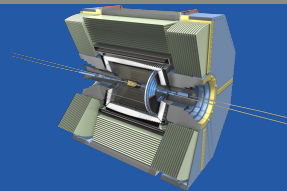
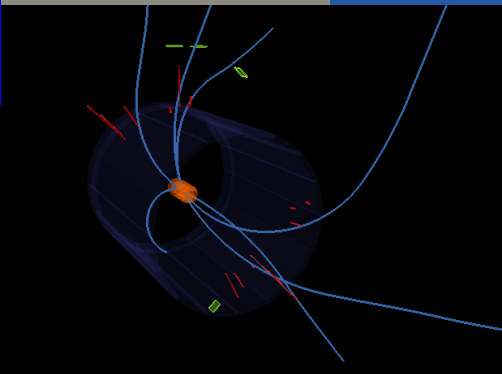
$$E = 7.5$$

$$\theta = 0.38$$





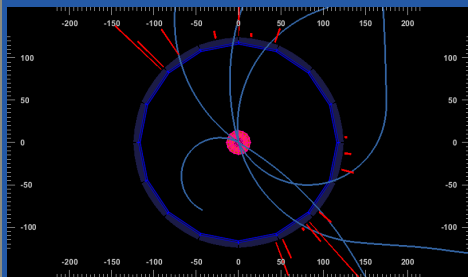
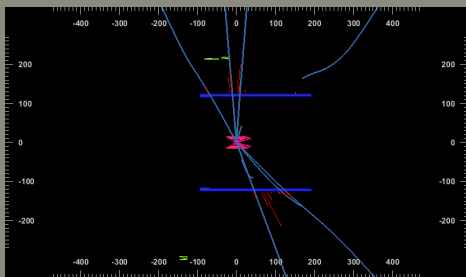
Belle II



Ereignis 6

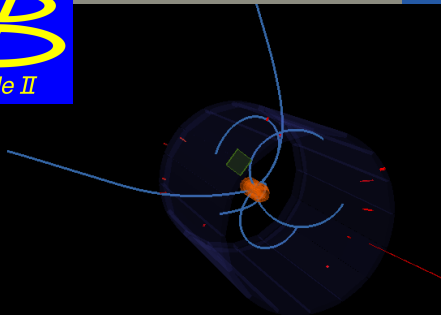
$$\mathcal{E} = 0.2$$

$$\vec{\eta} = 0.67$$





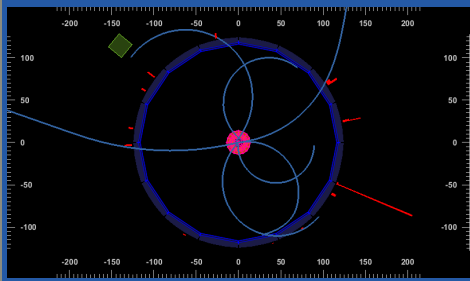
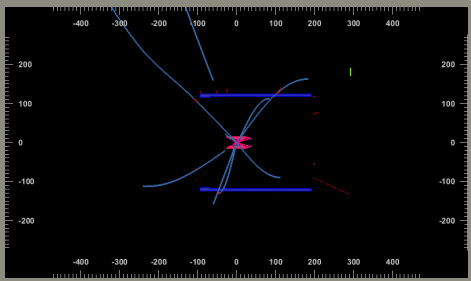
Belle II



Ereignis 7

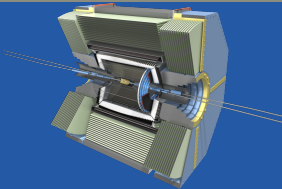
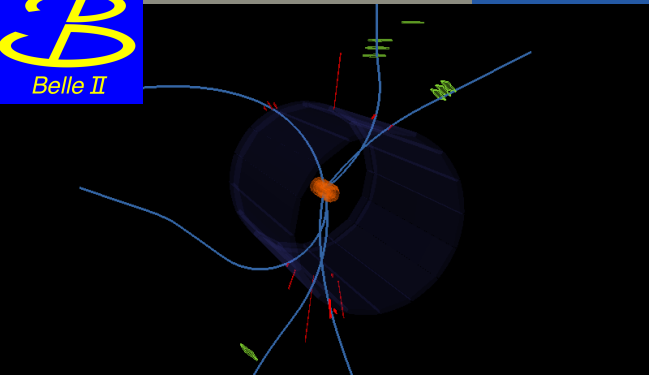
$$E = 7.8$$

$$\theta = 0.35$$





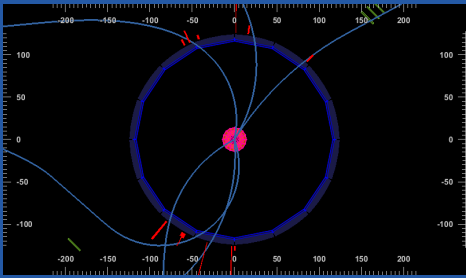
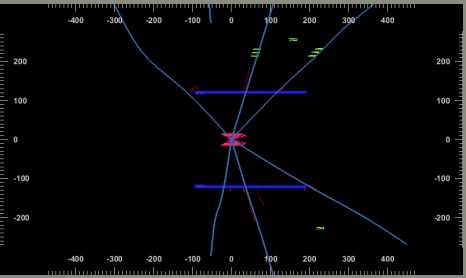
Belle II



Ereignis 8

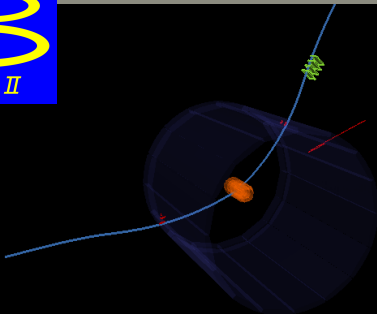
$$\cancel{E} = -0.6$$

$$\cancel{g} = 0.34$$





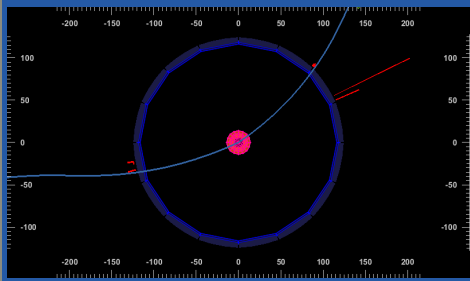
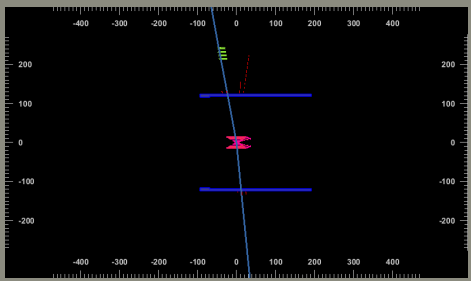
Belle II



Ereignis 9

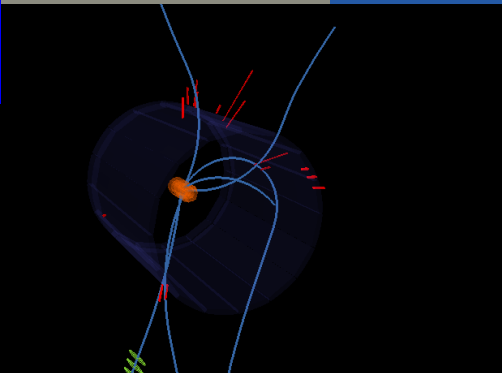
$$\cancel{E} = -3.8$$

$$\vec{\cancel{p}} = 0.82$$





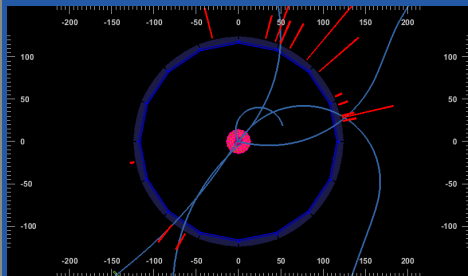
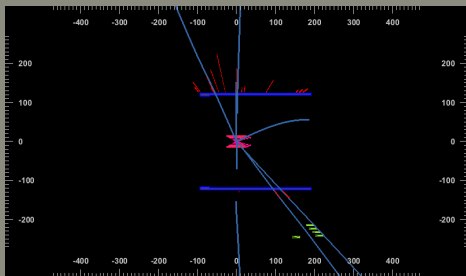
Belle II

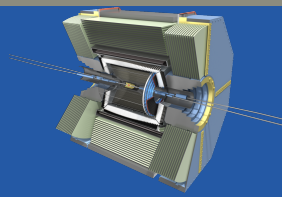
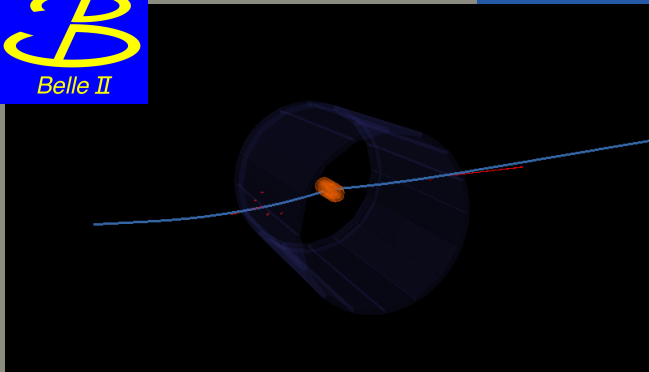


Ereignis 10

$$E = 12.2$$

$$\cos\theta = 0.36$$

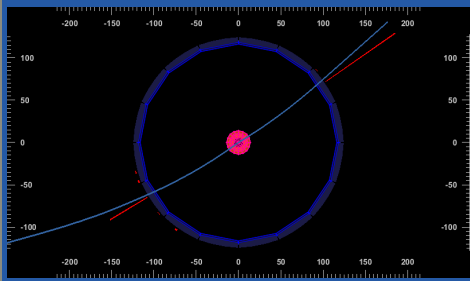
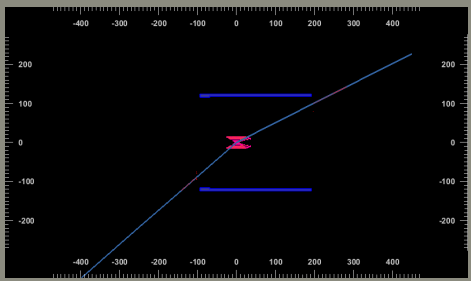




Ereignis 11

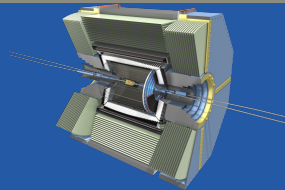
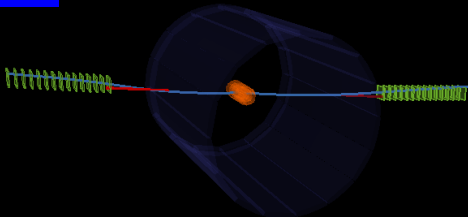
$\mathcal{E} = 0.0$

$\vec{\mu} = 1.0$





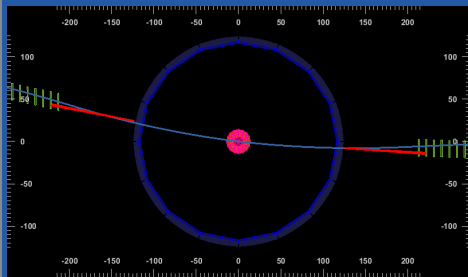
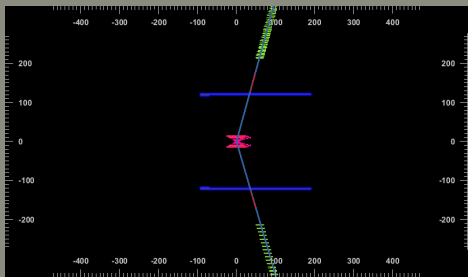
Belle II



Ereignis 12

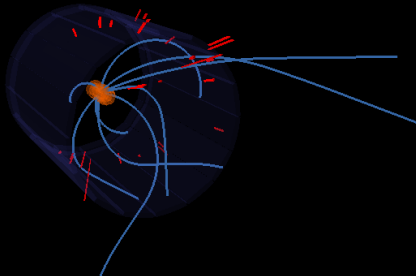
$$\cancel{E} = 0.0$$

$$\swarrow = 1.0$$





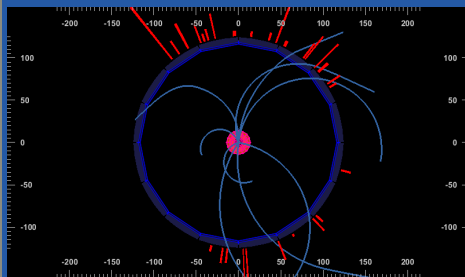
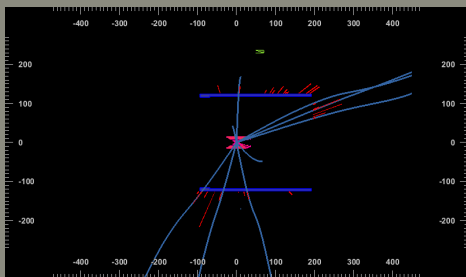
Belle II



Ereignis 13

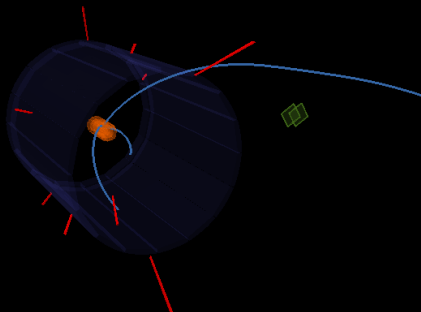
$$\cancel{E} = -0.7$$

$$\cancel{p}_z = 0.4$$





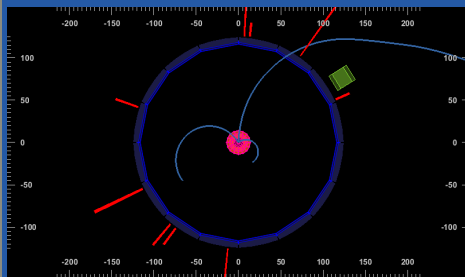
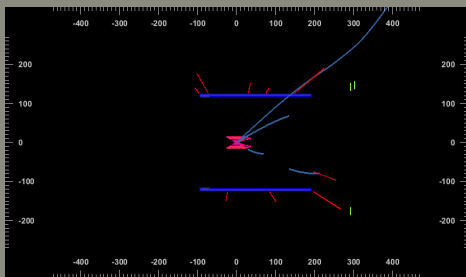
Belle II

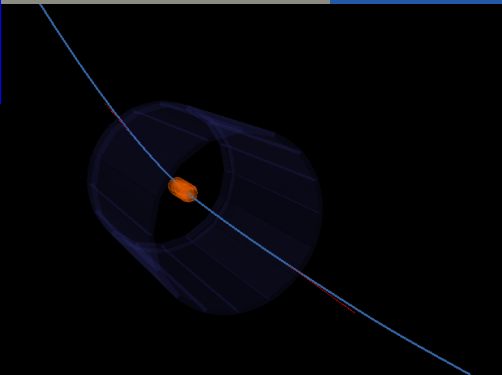


Ereignis 14

$$E = 72.7$$

$$\theta = 0.15$$

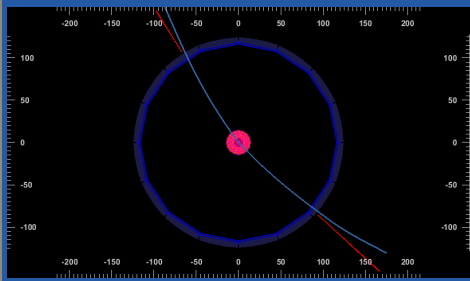
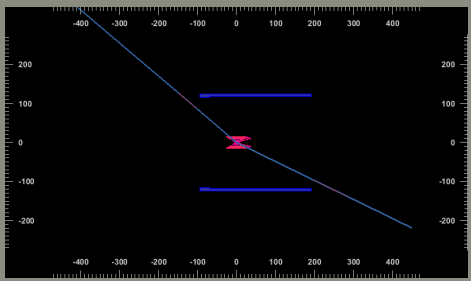


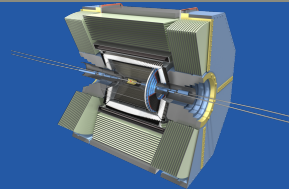
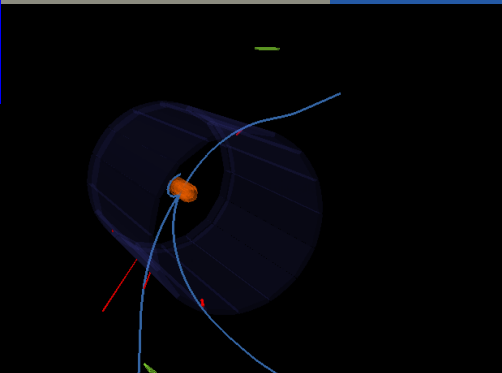


Ereignis 15

$E = -0.0$

$\theta = 1.0$

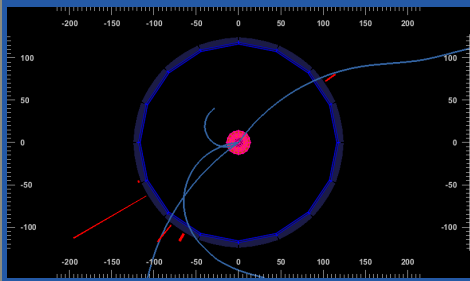
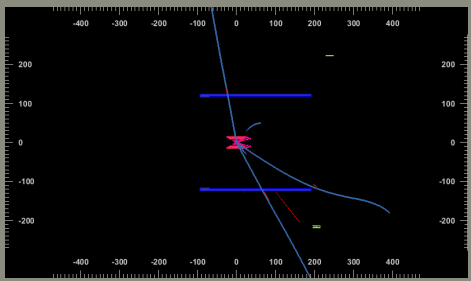




Ereignis 16

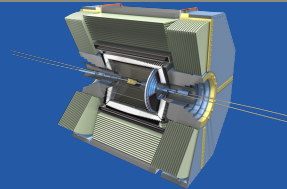
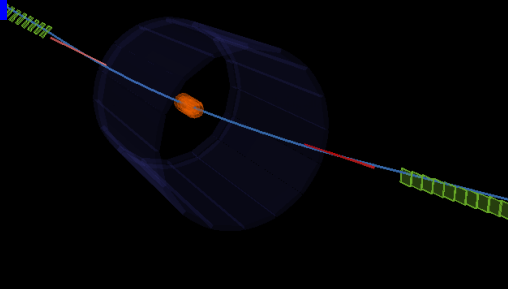
$E = 31.7$

$\theta = 0.8$





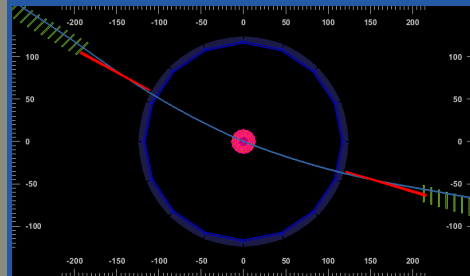
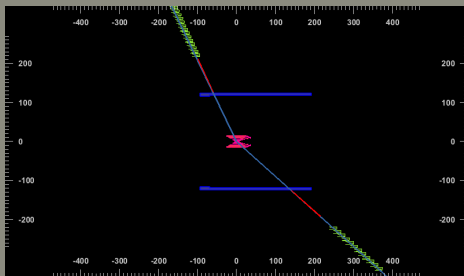
Belle II



Ereignis 17

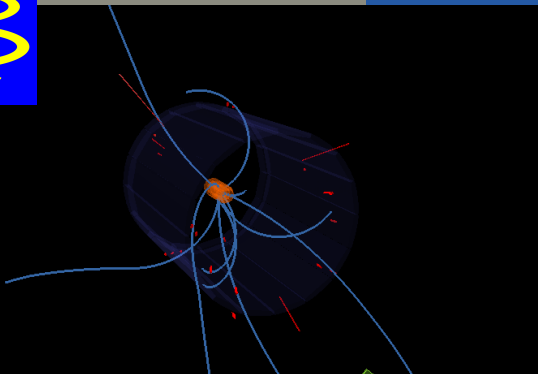
$$\cancel{E} = 0.0$$

$$\cancel{\theta} = 1.0$$





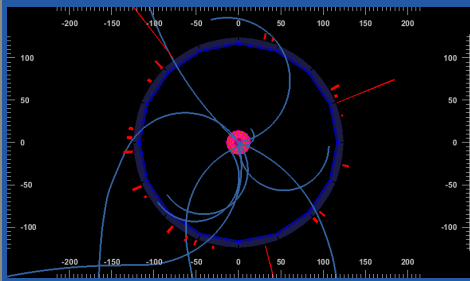
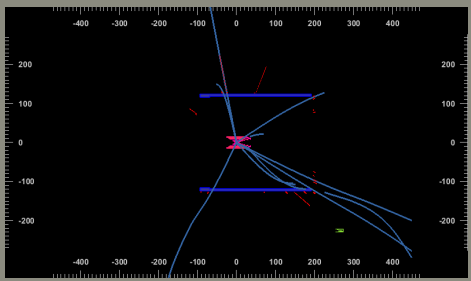
Belle II

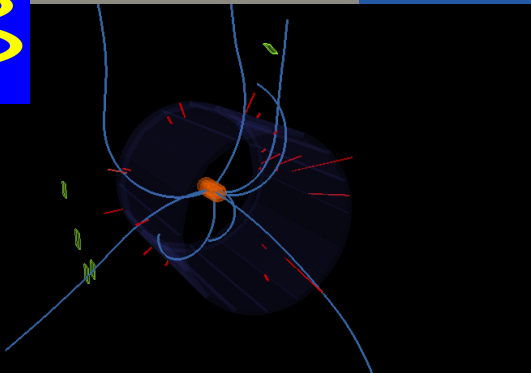


Ereignis 18

$$E = 3.9$$

$$\theta = 0.15$$

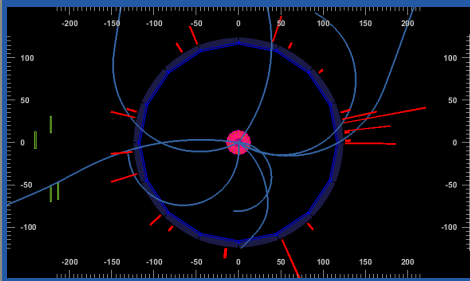
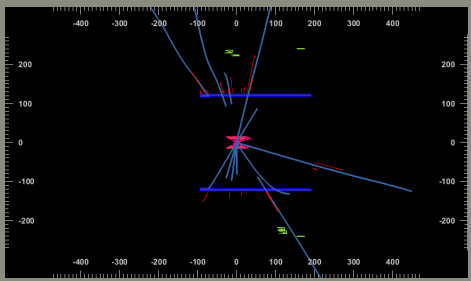




Ereignis 19

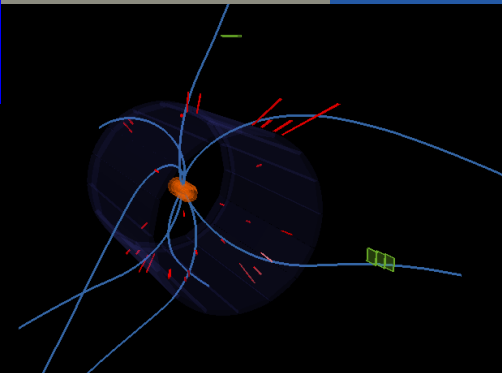
$E = 6.2$

$\vec{\eta} = 0.22$





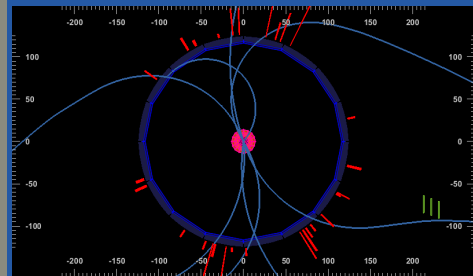
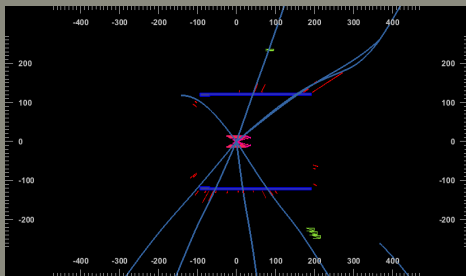
Belle II



Ereignis 20

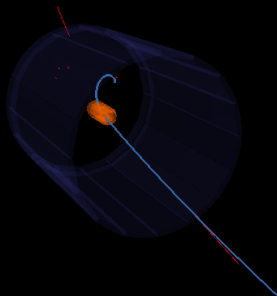
$$\cancel{E} = -0.2$$

$$\cancel{\eta} = 0.35$$





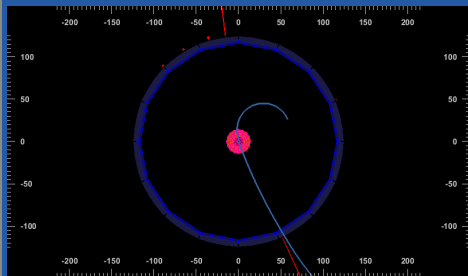
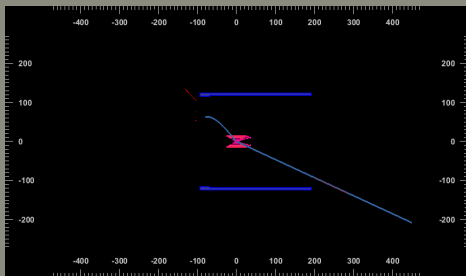
Belle II

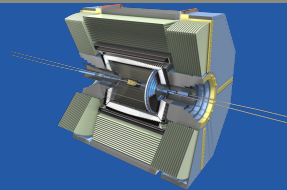
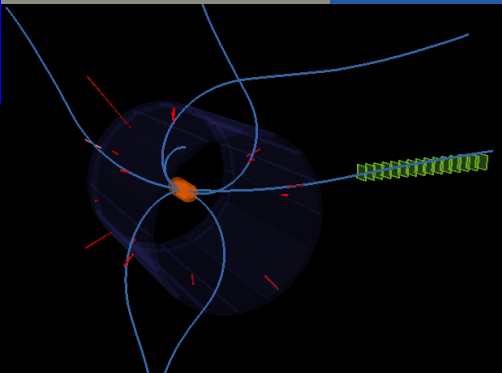


Ereignis 21

$$\cancel{E} = -0.6$$

$$\swarrow = 0.99$$

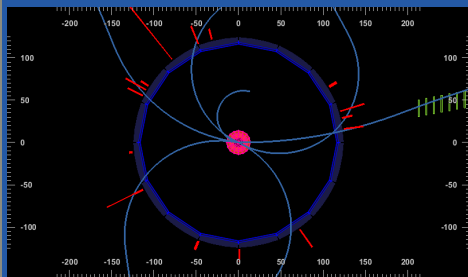
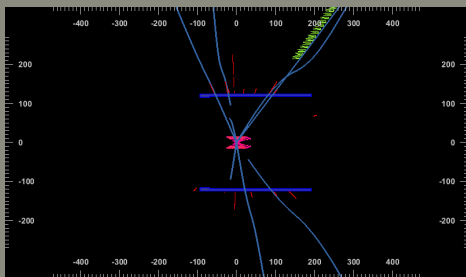




Ereignis 22

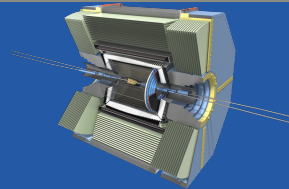
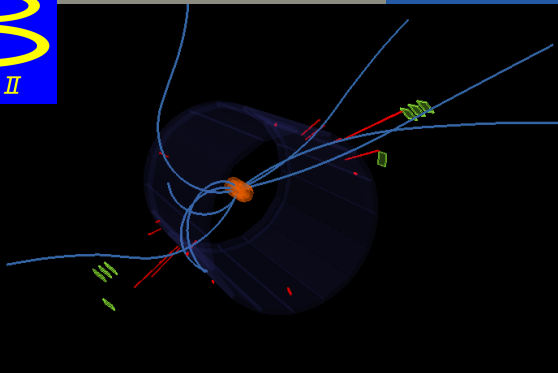
$$E = 3.5$$

$$\vec{g} = 0.38$$





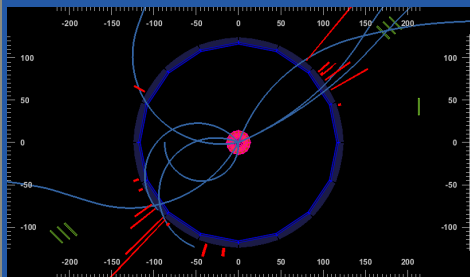
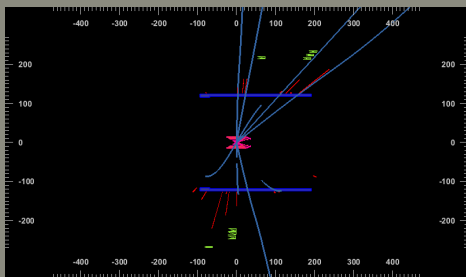
Belle II



Ereignis 23

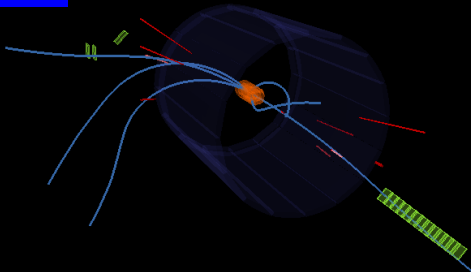
$$\cancel{E} = -2.2$$

$$\cancel{\eta} = 0.47$$





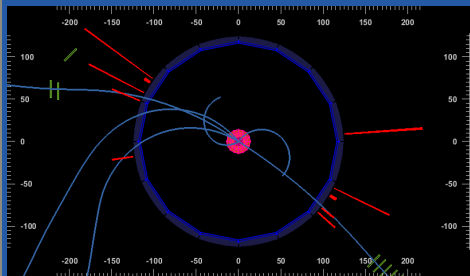
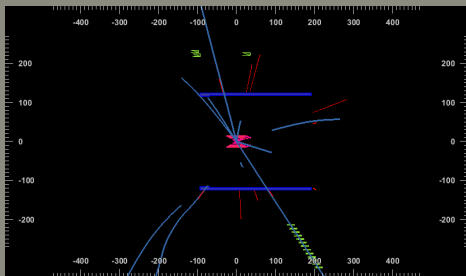
Belle II



Ereignis 24

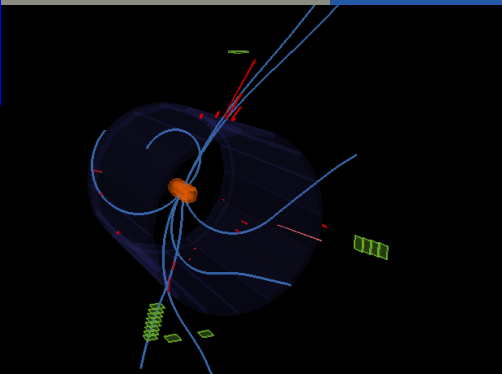
$$E = 0.1$$

$$\theta = 0.58$$





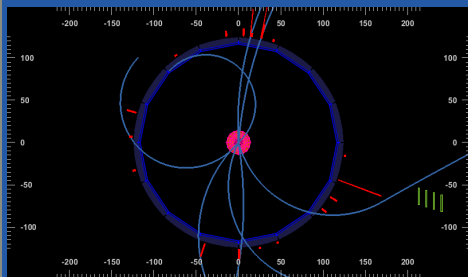
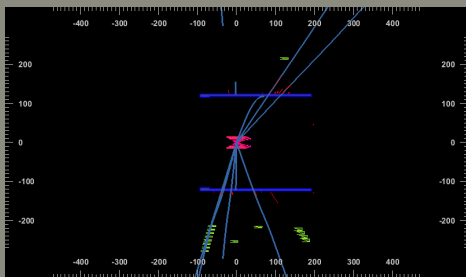
Belle II



Ereignis 25

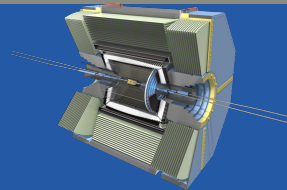
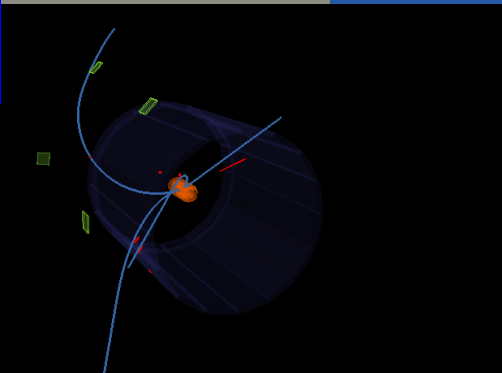
$$\cancel{E} = -0.3$$

$$\cancel{\eta} = 0.54$$





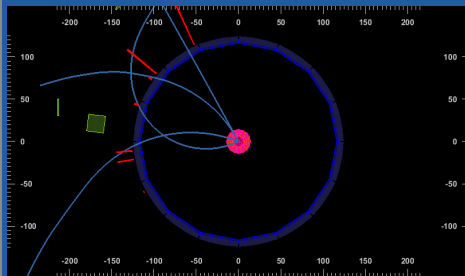
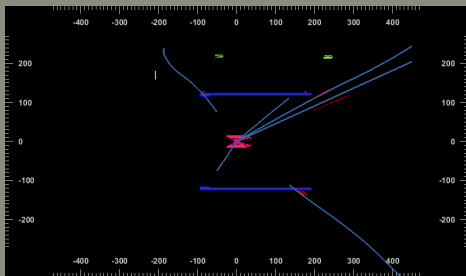
Belle II



Ereignis 26

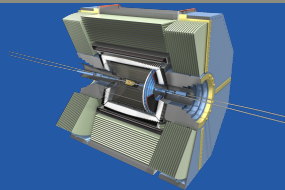
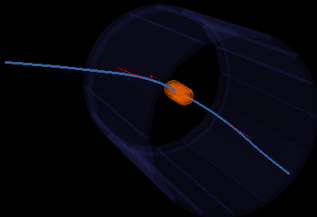
$$\cancel{E} = -1611.4$$

$$\vec{\alpha} = 0.97$$





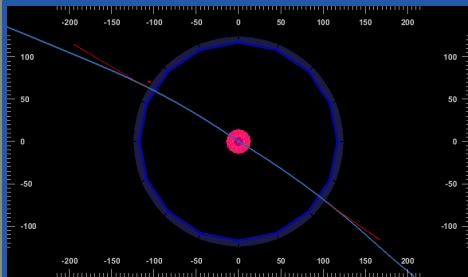
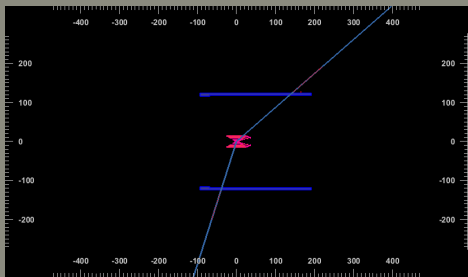
Belle II



Ereignis 27

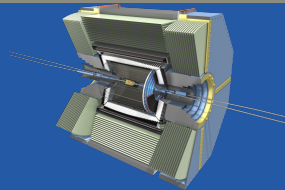
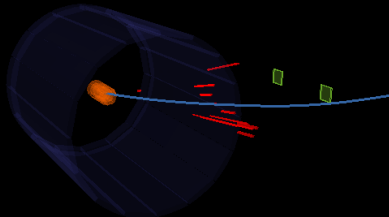
$$\cancel{E} = -0.1$$

$$\cancel{\nu} = 1.0$$





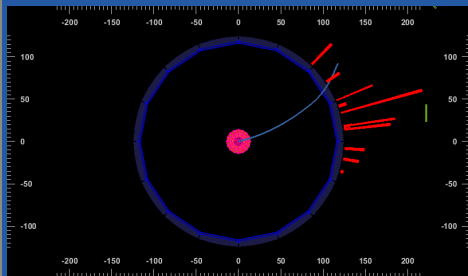
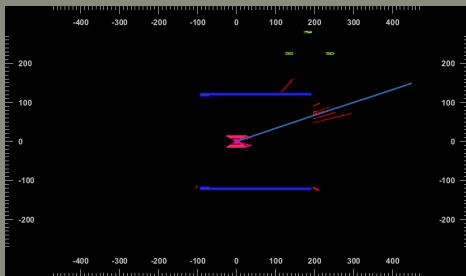
Belle II



Ereignis 28

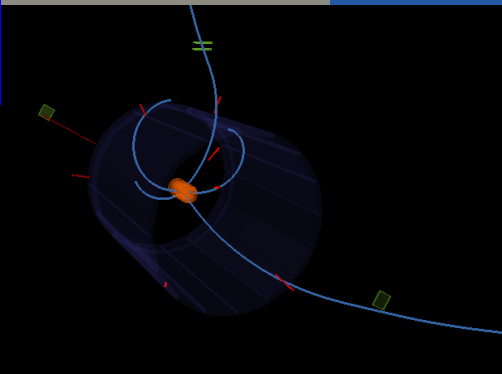
$$E = 41.0$$

$$\cos\theta = 0.91$$





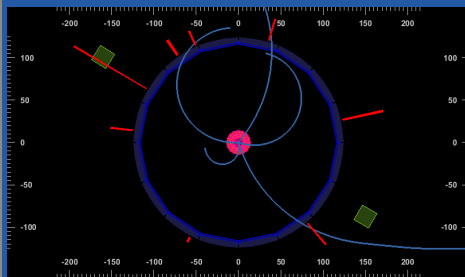
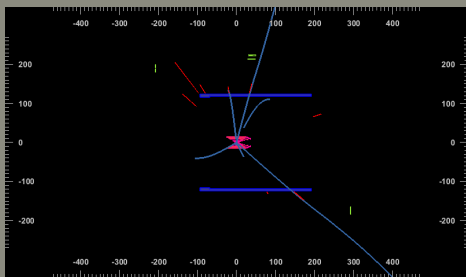
Belle II



Ereignis 29

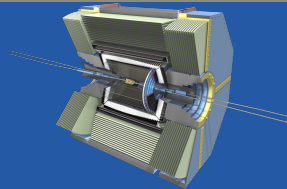
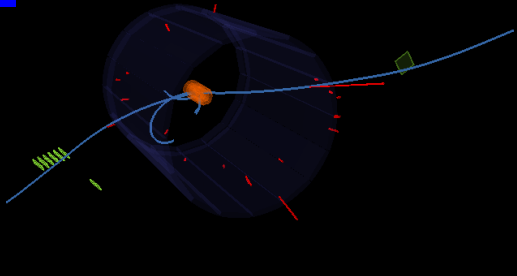
$$E = 44.6$$

$$\theta = 0.15$$





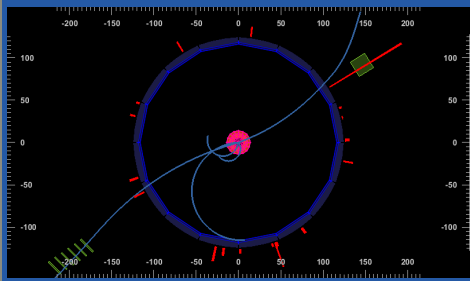
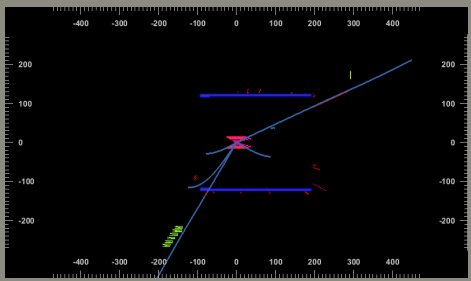
Belle II



Ereignis 30

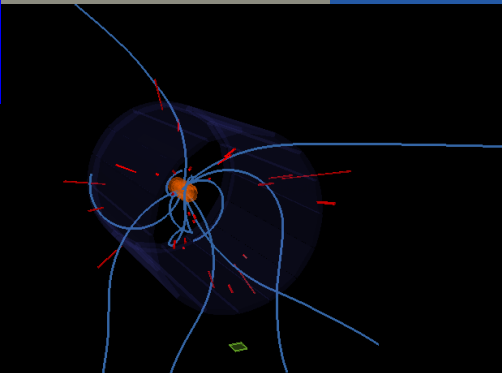
$$E = 15.9$$

$$\vec{g} = 0.52$$





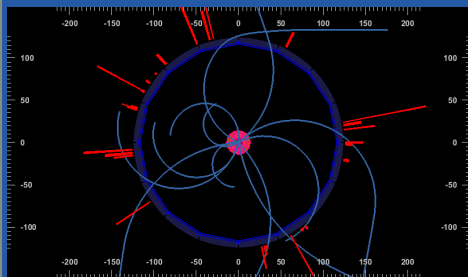
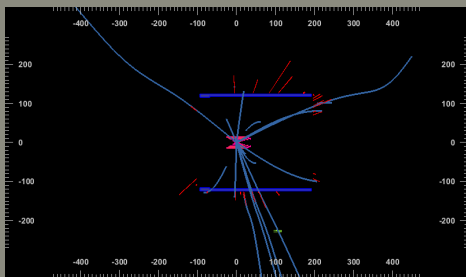
Belle II

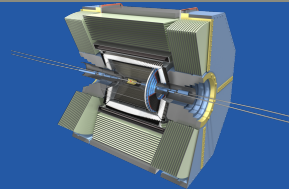
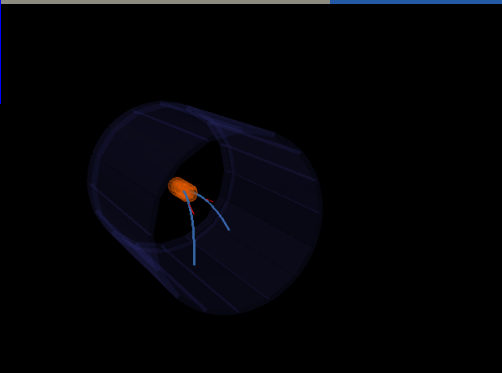


Ereignis 31

$$E = 0.7$$

$$\vec{g} = 0.02$$

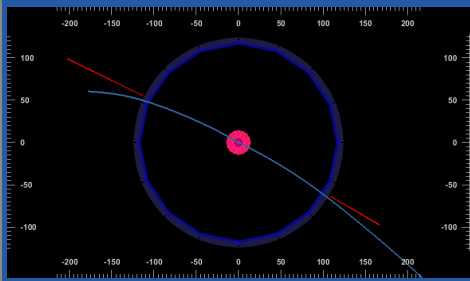
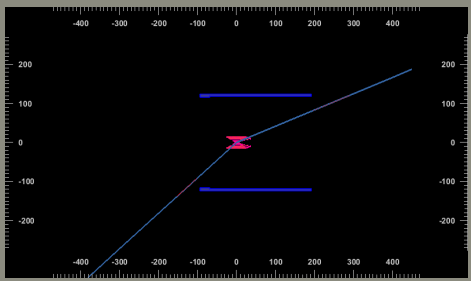


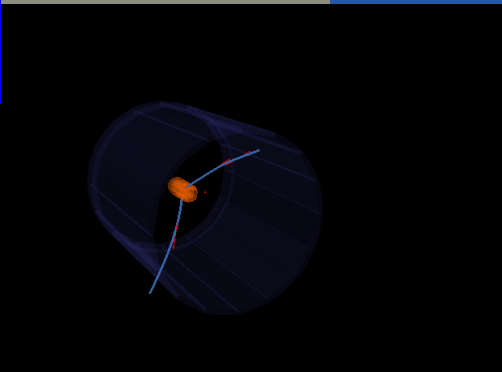


Ereignis 32

$E = -0.0$

$\vec{r} = 1.0$

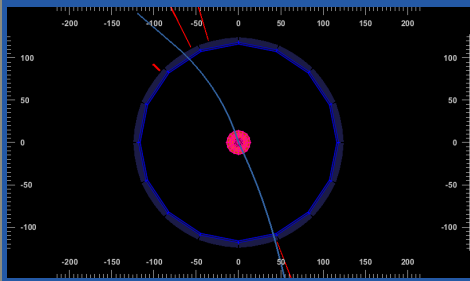
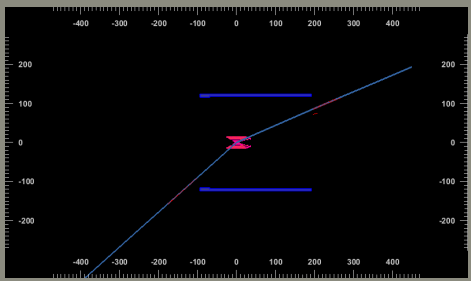




Ereignis 33

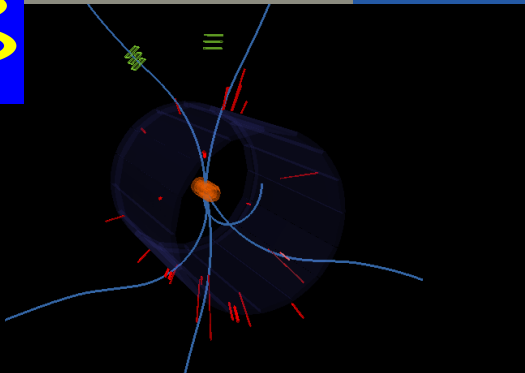
$\cancel{E} = -0.0$

$\swarrow = 0.99$





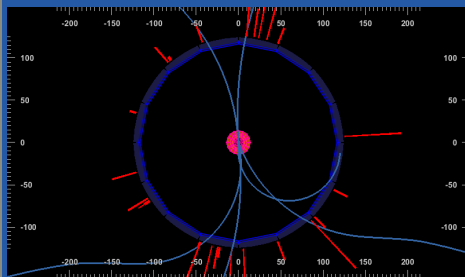
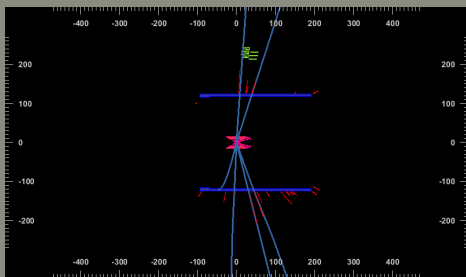
Belle II



Ereignis 34

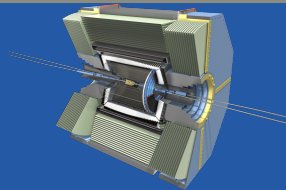
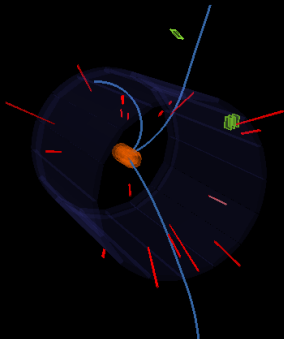
$$E = 0.1$$

$$\theta = 0.49$$





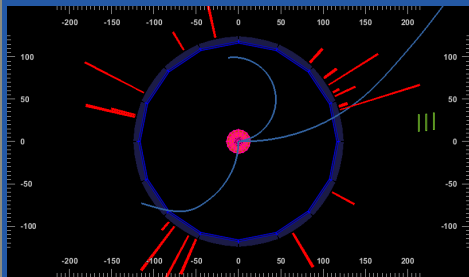
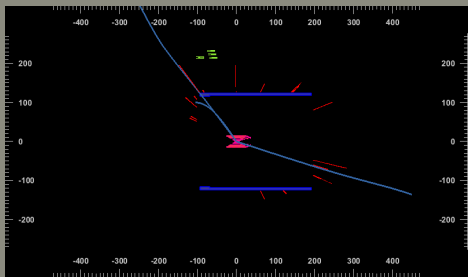
Belle II



Ereignis 35

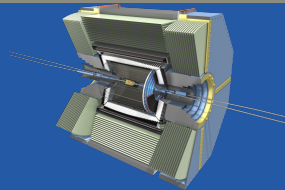
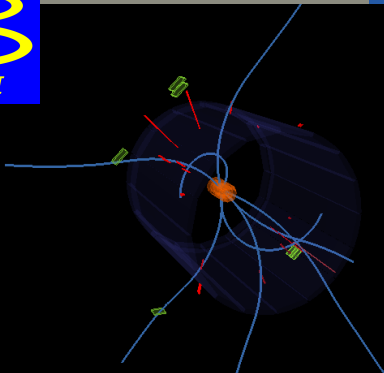
$$E = 31.4$$

$$\theta = 0.28$$





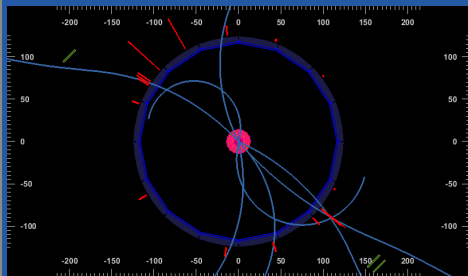
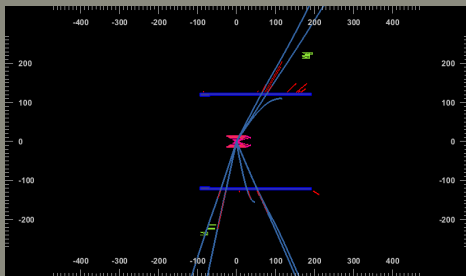
Belle II



Ereignis 36

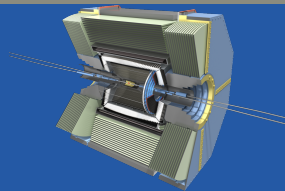
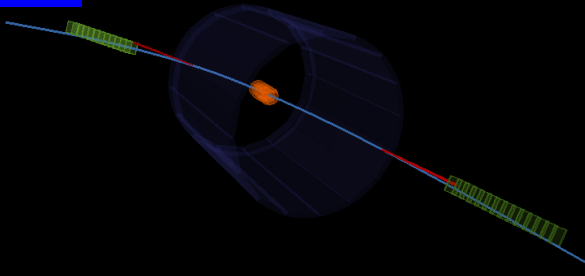
$$\cancel{E} = 0.3$$

$$\cancel{p} = 0.63$$





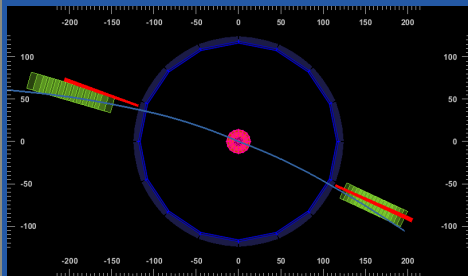
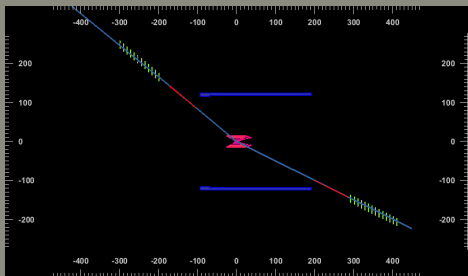
Belle II



Ereignis 37

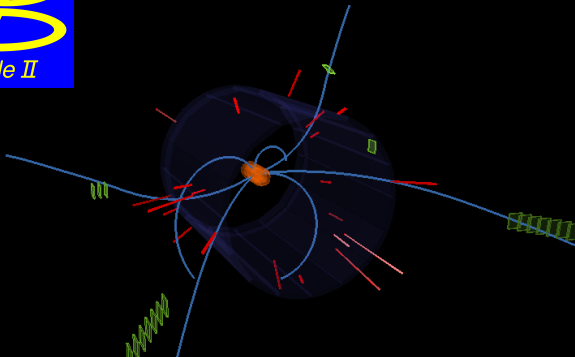
$$E = -0.0$$

$$\theta = 1.0$$





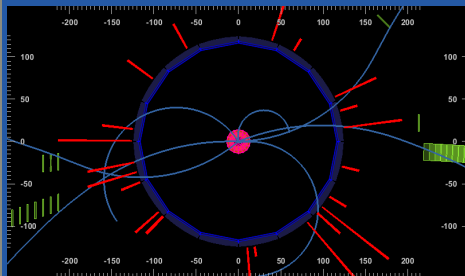
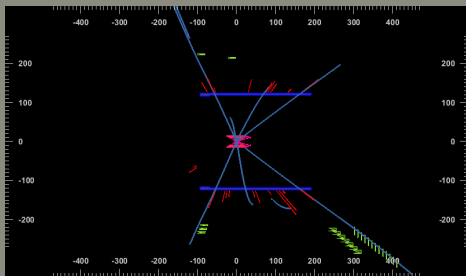
Belle II

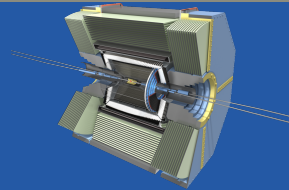
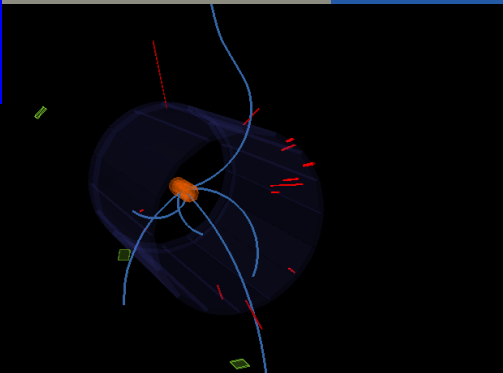


Ereignis 38

$$E = 7.3$$

$$\theta = 0.08$$

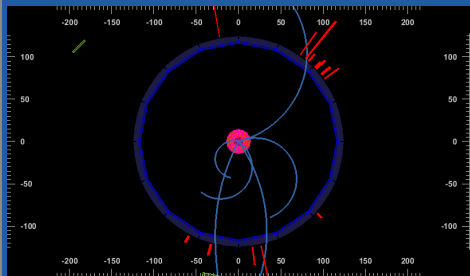
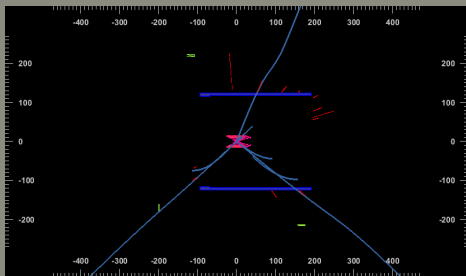




Ereignis 39

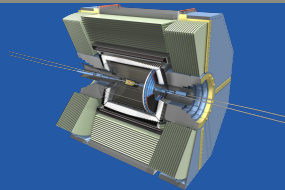
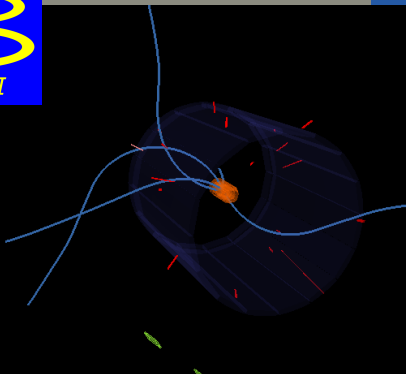
$$E = 18.2$$

$$\theta = 0.15$$





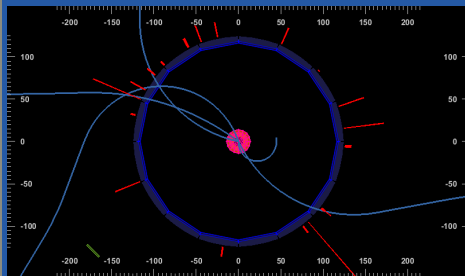
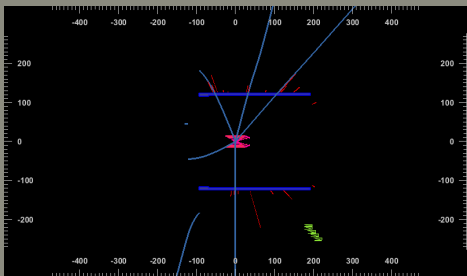
Belle II



Ereignis 40

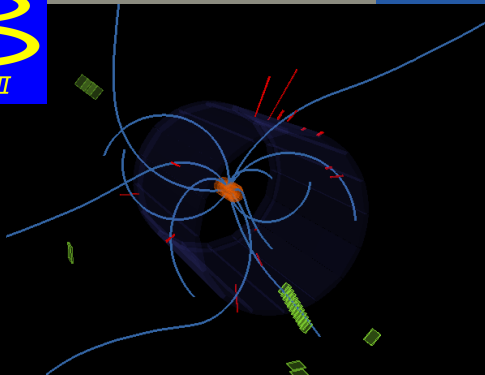
$$\cancel{E} = 2.0$$

$$\cancel{\nu} = 0.26$$





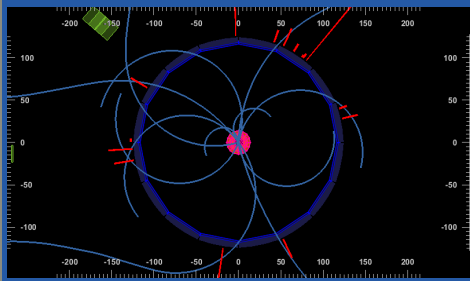
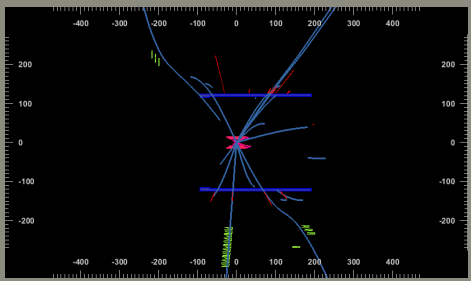
Belle II



Ereignis 41

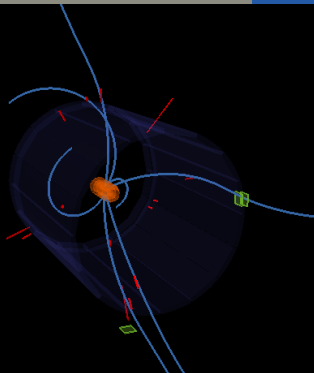
$$\mathcal{E} = 1.2$$

$$\theta = 0.29$$





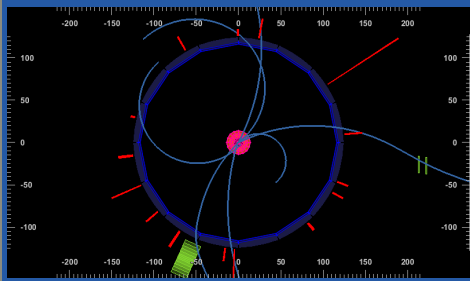
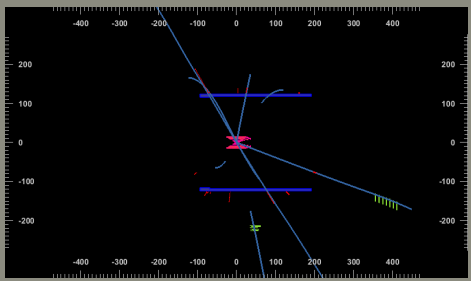
Belle II



Ereignis 42

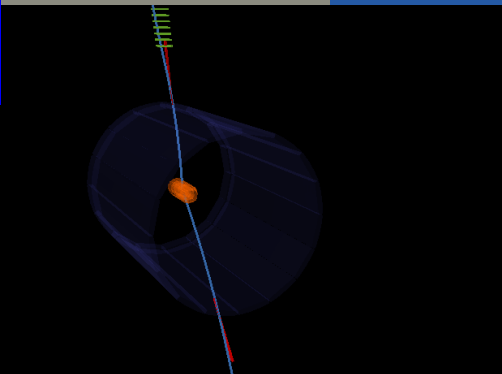
$$E = 6.2$$

$$\theta = 0.43$$





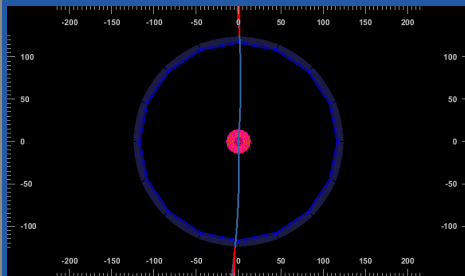
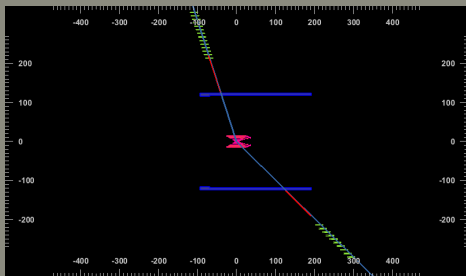
Belle II



Ereignis 43

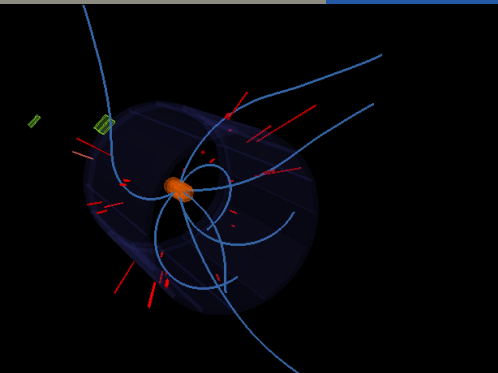
$$E = -0.0$$

$$\theta = 1.0$$





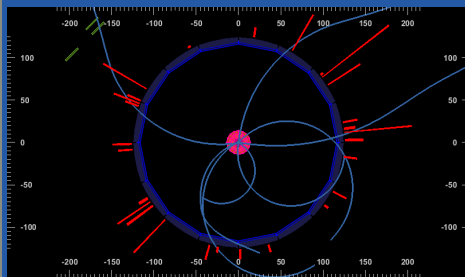
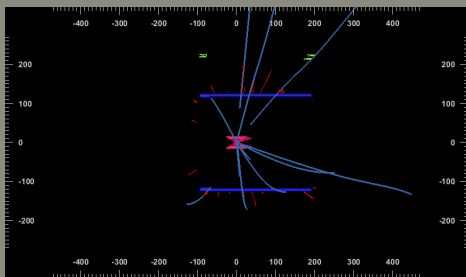
Belle II



Ereignis 44

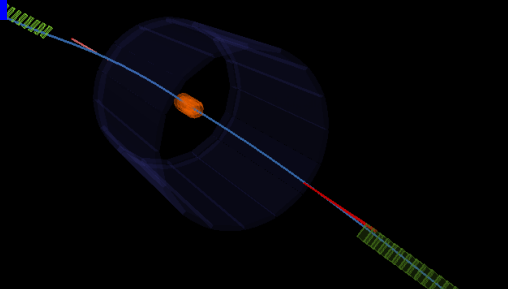
$$E = 8.3$$

$$\theta = 0.06$$





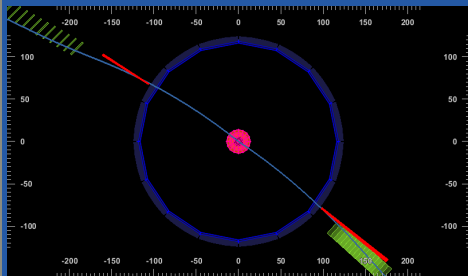
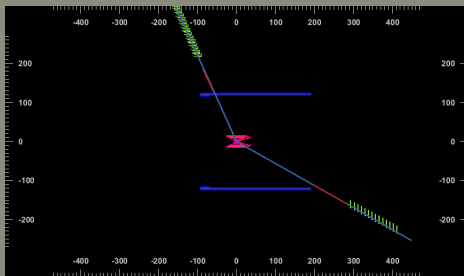
Belle II



Ereignis 45

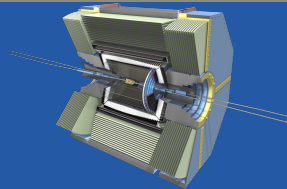
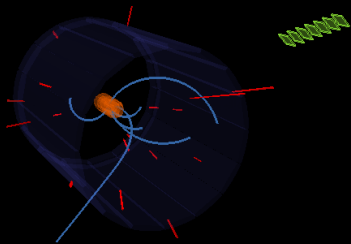
$$\mathcal{E} = 0.1$$

$$\angle = 0.94$$





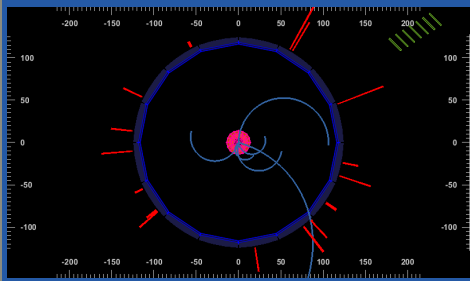
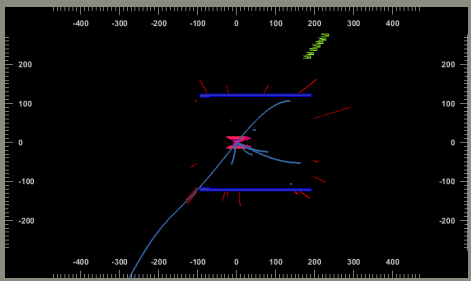
Belle II



Ereignis 46

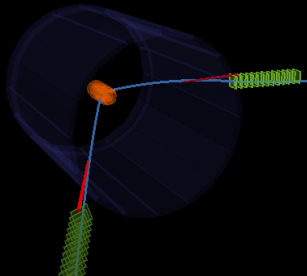
$$E = 30.1$$

$$\theta = 0.09$$





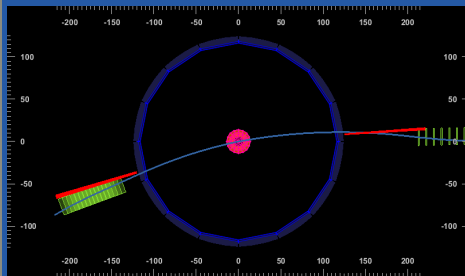
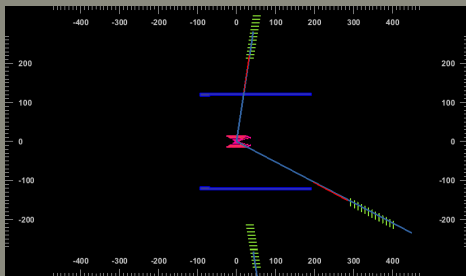
Belle II

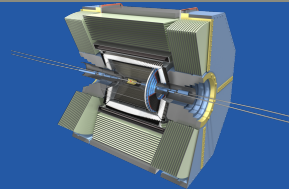
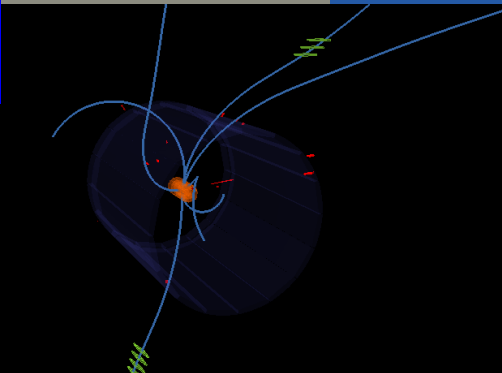


Ereignis 47

$$\cancel{E} = -0.1$$

$$\cancel{\eta} = 0.65$$

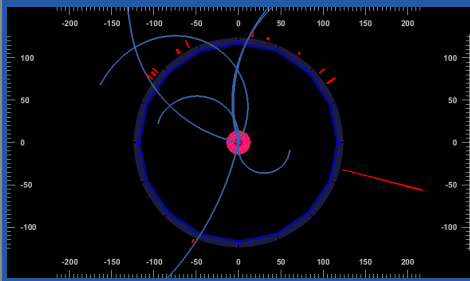
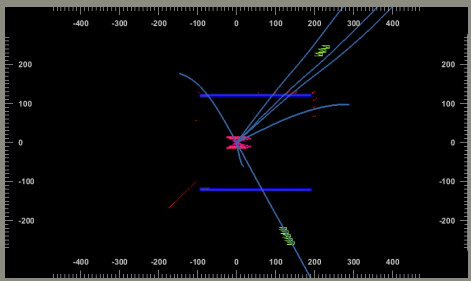




Ereignis 48

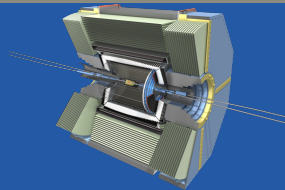
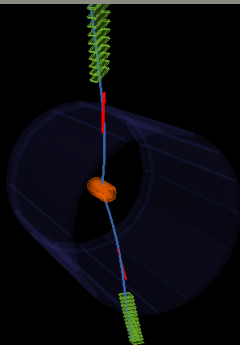
$E = -0.0$

$\vec{g} = 0.24$





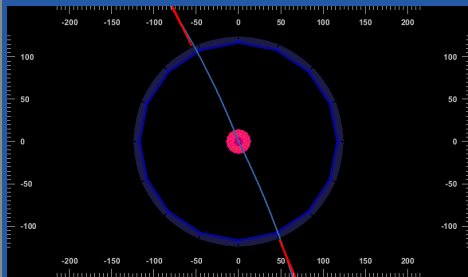
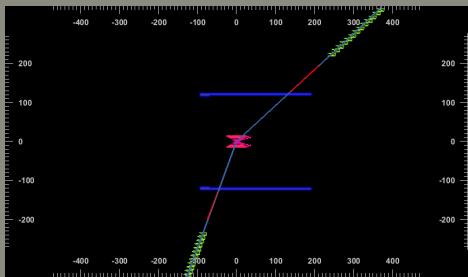
Belle II



Ereignis 49

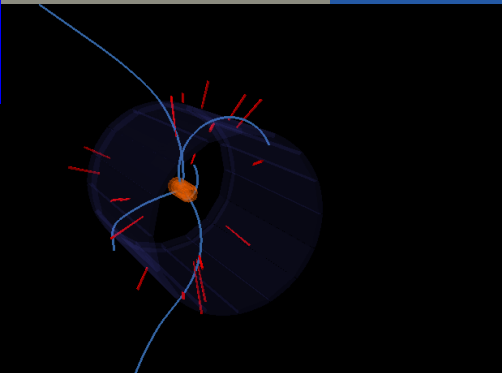
$$\cancel{E} = 0.0$$

$$\swarrow = 1.0$$





Belle II



Ereignis 50

$$E = 41.4$$

$$\theta = 0.11$$

